

## Image Pairs for the Glaciers Then and Now Classroom Activity

Print the following pages, cut apart the glacier images, and laminate for classroom use. For your reference, the information about each photo pair is below.

Please refer to activity directions on *Windows to the Universe* for more information about classroom implementation of this activity. The web page that describes this activity is:

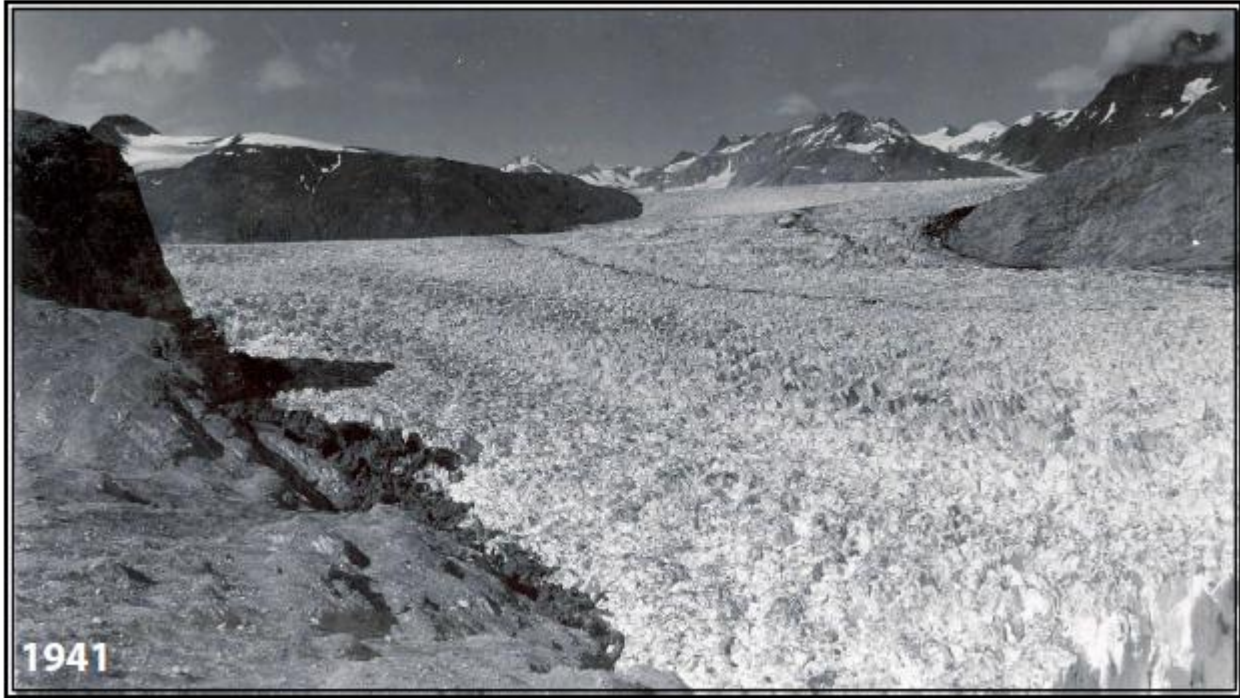
[http://www.windows2universe.org/teacher\\_resources/melting\\_glacier.html](http://www.windows2universe.org/teacher_resources/melting_glacier.html)

Pair	Year	Photographer	Source	Page
1 Muir Glacier Lat: 59.0783 Long: -136.3606	1941	William O. Field	American Geographical Society	1 top
	2004	Bruce F. Molina	USGS	1 bottom
2 Carroll Glacier Lat: 59.0842 Long: -136.6449	1906	Charles Will Wright	USGS	2 top
	2003	Bruce F. Molina	USGS	2 bottom
3 Holgate Glacier Lat: 59.8711 Long: -149.9186	1909	Ulysses S. Grant	USGS	3 top
	2004	Bruce F. Molina	USGS	3 bottom
4 McCarty Glacier Lat: 59.7700 Long: -150.2208	1909	Ulysses S. Grant	USGS	4 top
	2004	Bruce F. Molina	USGS	4 bottom
5 Muir Glacier Lat: 59.0783 Long: -136.3606	1899	Grove Karl Gilbert	USGS	5 top
	2003	Ron Karpilo	National Park Service	5 bottom
6 Toboggan Glacier Lat: 61.0217 Long: -148.2769	1909	Sidney Paige	USGS	6 top
	2000	Bruce F. Molina	USGS	6 bottom
7 Muir Glacier Lat: 59.0783 Long: -136.3606	1976	Bruce F. Molina	USGS	7 top
	2003	Bruce F. Molina	USGS	7 bottom
8 Pedersen Glacier Lat: 59.8928 Long: -149.7805	1909	Ulysses S. Grant	USGS	8 top
	2004	Bruce F. Molina	USGS	8 bottom

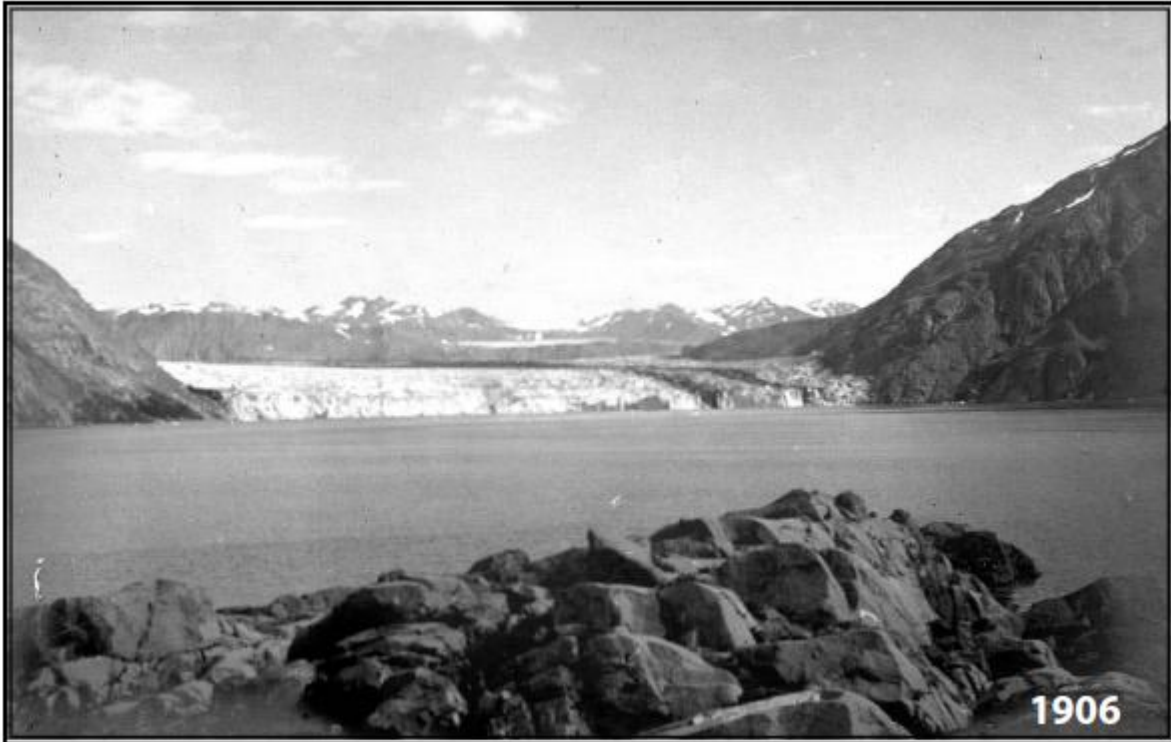
*All glacier images are all from Alaska, U.S. and were published by the National Snow and Ice Data Center - World Data Center for Glaciology ([www.nsidc.org](http://www.nsidc.org))*

*Page numbers listed above correspond to the numbers on the following pages.*

## Muir Glacier



## Carroll Glacier



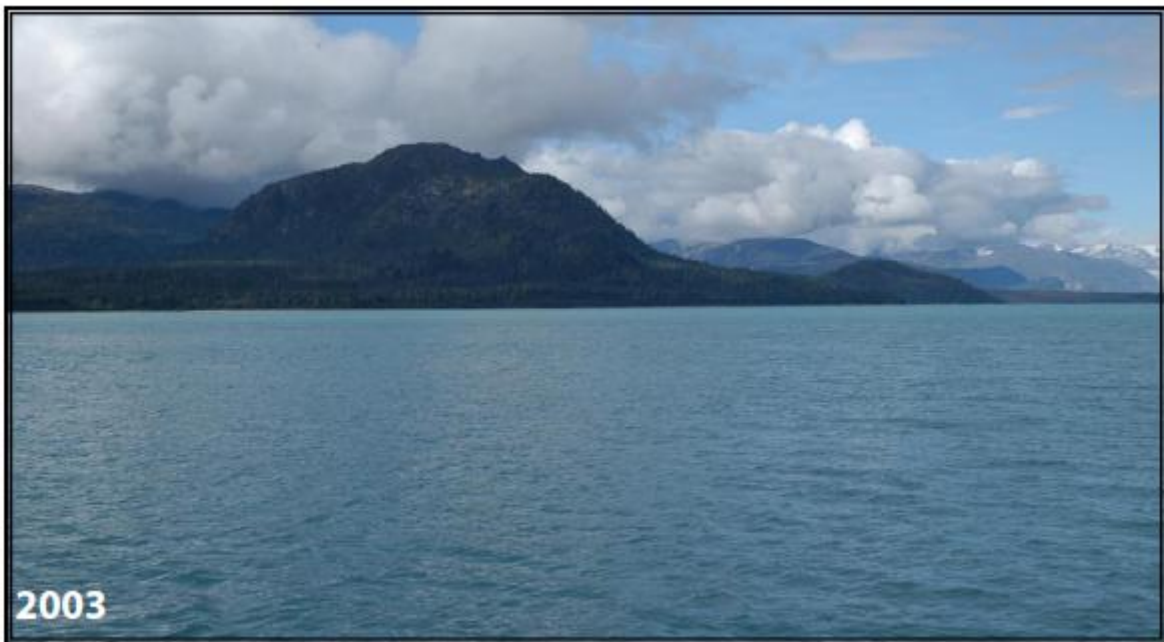
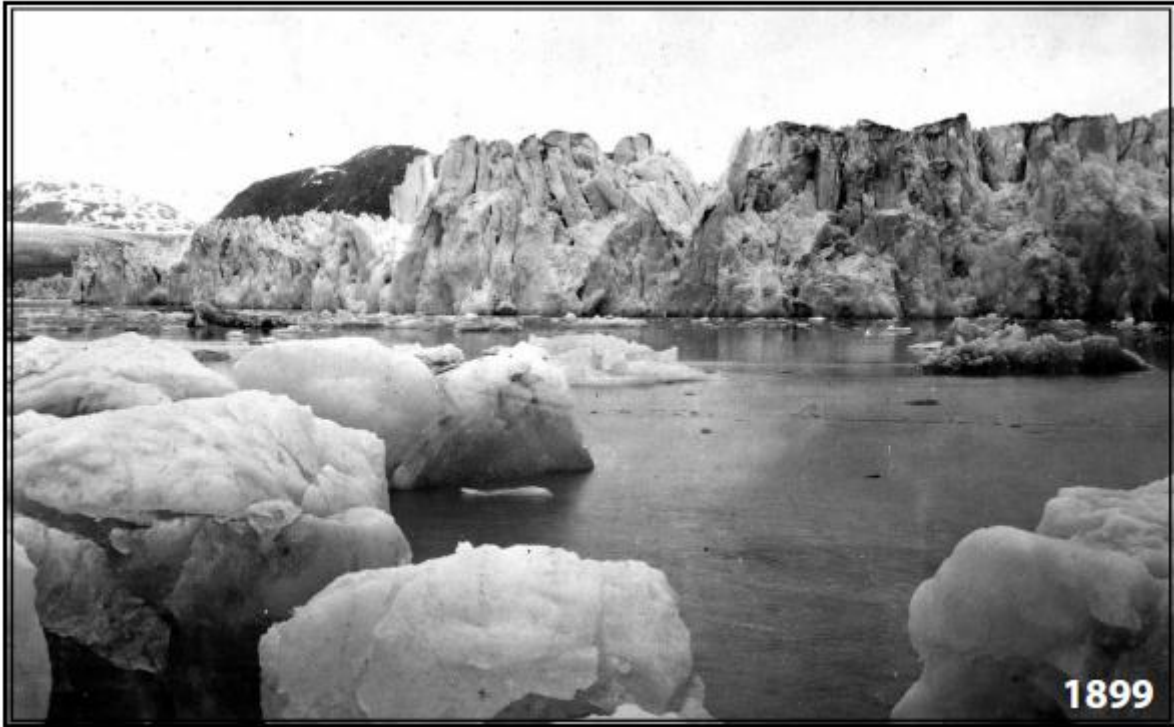
## Holgate Glacier



## McCarty Glacier



## Muir Glacier



## Toboggan Glacier



## Muir Glacier





## Pedersen Glacier

